



1.

Belmont Street, Bognor Regis
West Sussex. PO21 1BL

tech@regiscentre.co.uk
iain.jordan@regiscentre.co.uk

ALEXANDRA
THEATRE

Tel / Fax: 01243 867676
Box Office: 01243 861010

Technical specifications –Short Format – Subject to alteration-Please call us to confirm details.

Stage

Proscenium Arch – Painted Brick with optional soft tormentors

Height – 5.18m (17'0")

Width – 8.99m (30'5") [without tormentors, 26' with.]

Stage Trim height - variable between 5.18m (17') and 4.5m (15') – mobile header panel on DS winch 1

Stage Width

Depth of Stage – 7m to iron, 8 m to ds edge, extension available, please confirm for details.

Iron Line - House From DS From DS 1.23m (4')

Tabs - 1.43m (4'8")

Wings Stage Right [Prompt] 3.2m (10'5") width, height limitation USR at 4m (13'1")
Stage Left [Pin rail] 3.9m (12'9")

Fly sets [SL Wing] - 11 of 4 line hemp sets [SWL 250kg]
2 of 2 line hemp with block sets [Rated SWL 50 KG]
7 of Worm Gear Winches for Header, LX and motorised ¼ Tabs [Fixed, SWL 500KG]

Counterweight sets – House Tabs Flown DSR wing-Single purchase set.[deads in to short ladder height]

Safety Curtain - Single purchase caged set DSL, motorised control from prompt.

Lighting

Dimmers -	4x Chili 2410i racks	
	94 Channels – Capacity: 0.1A min /10A max	
Lighting Desk -	ETC Ion with fader wing and IRFR ipad remote	
2x FOH Gantries	2 m (approx 6ft) from tabs	7 Channels
		12
	10 m (approx 33ft) from tabs	Channels
5x On-Stage LX Bars	0.60m (1'11") from Tabs	18 Channels
	2.10m (6'10") from Tabs	10 Channels
	3.45m (11'3") from Tabs	10 Channels
	5.10m (16'8") from Tabs	6 Channels
	6.60m (21'7") from Tabs	4 Channels
Ground Positions	2 Channels on booms	
	8 Channels per side	
	(16 Channels)	
Lighting Rigging	8 Tank traps, various booms and hook clamps/stand off arms	
Followspots -	2 RJ Manon in the Centre of Bridge 2, fitted with cans sets.	

General house rig consists of R G B A and open white washes and a collection of specials FOH, please contact us with specific requirements. This is adaptable although we do not pre rig without prior arrangement.

Atmospheric Effects - Chauvet 3D Fazer, Antari hazer. Available (charge for fluid). Various pyrotechnics are permitted with prior arrangement

No oil crackers [except DF50] permitted onsite.

All auditorium smoke detectors are rate of heat rise, haze not to be let in foyers.

Permanently rigged FOH -

FOH Bridge 1 5 Strand Cantata 11/26

FOH Bridge 2 12 Strand Cantata 18/32

Follow Spots 2 RJ Manon

Other Rig - Mobile so long as General rig reinstated on get out.

FOH Bridge 1 5 Strand
31 Strand Patt 743
32 Thomas Par 64 -Long Nose
4 Thomas Par 64 Floor par - Short nose
2 Stageline Twist250 movinghead spot
12 Strand Cantata Fresnel
4 Strand Coda 4 Cell
2 Strand Cantata 11/26
1 Strand Cantata 18/32
4 Strand Cantata PC
2 CPC Molefay 4 Cell DMX
10 Pulse LEDBAR 320

Lighting Control

6way DMX buffer installed DSR wing
4 way DMX buffer (Mobile)
2 DMX lines installed from box, to DSR wing

Sound *(in house rig)*

Sound Desk Yamaha M7CL (48/8 channel, digital sound desk) with M7CL Remote
 Rugged on a screw jack lifter – please contact us if you want to use your own desk.

FOH Rig - 2 stacks of SLS Ribbon driven line array system, flown from proscenium sides. [3 high/mid LS8800 a side, one LSB8115 sub a side and a SP810 twin 18" sub]
 - 2x Wharfedale Si-12 Full Range Speakers flown – delays

Foldback Various amps – based on Yamaha PM5000

 2x JBL Control 1 On pros as Monitors

 2 Wharfedale Si 12 Flown and SI18 Sub each side, Floor Mounted

 2 JBL Control 1's

 Lem Monitor wedge system

Microphones Available for Hire – [2 included per hire]
 8 Sennheiser EW300 Radio sets, 4 handhelds, 8 beltpacks. Rugged SL wing

 1 Shure PG drum mic kit – comprising of
 1 sm57
 1 PG 52
 3 PG 56
 Clips to suit.

 2 SM58
 3 SM57's
 2 Rode NTG1
 2 D606
 2 Senn e614
 1 Audix OM6
 1 AT MB2K
 2 Behringer C-1
 3 Audio Technica Pro 45 hanging set
 4 Senn e835 ew300 G3 handheld
 8 Senn Sk300 G3 beltpacks
 5 Senn MKE2 fleshtone
 5 Audio Technica fleshtone jaw line with locking jack tail
 4 Pulse DI 50 Active Box

CD player Sony CDS single deck.

BluRay Philips BluRay Player

Multicores Runs From sound control FOH to DSL (24:8) [approx. 35m run]

On Stage DSR 32a Single phase Clean Supply, Sending to DSL via 16a

Control Room 32a Single phase Clean Supply feeding All Sound supplies FOH

Sound Position Situated in Auditorium Right rear, Our mixer is on a scissor lift platform; please contact us if you'd rather use your own mixer.

Orchestra Pit

Normally positioned at Auditorium level, the front 2 rows of the seating can be removed. This can be raised hydraulically to Stage level giving a thrust of 1.91m (6.27ft)

extra. A £120 contra charge applies for this per weeks use

This can be lowered to provide a pit with dimensions as follows -[optional vomitorium forestage available while down, please call us for details.]

MD has a single cue light and various unlit music stands available, we do not supply lit stands.

Dimensions of Pit:

Height-	1.85m (6')	Width-	6.97m (22'10")
Depth Under Stage- (12'8")	2.97m (9'8")	Total Depth-	3.88m

Dressing Rooms

6 Dressing Rooms Accommodating 130 People Max with show relay audio and video

1 – 3 People

2, 3, 4, - 10 People

5 – 2 People / Company office

6 – 15 People

Chair store - Up to 15 people [overflow, only show relay audio]

Separate Male & Female Toilets with Showers in Each.

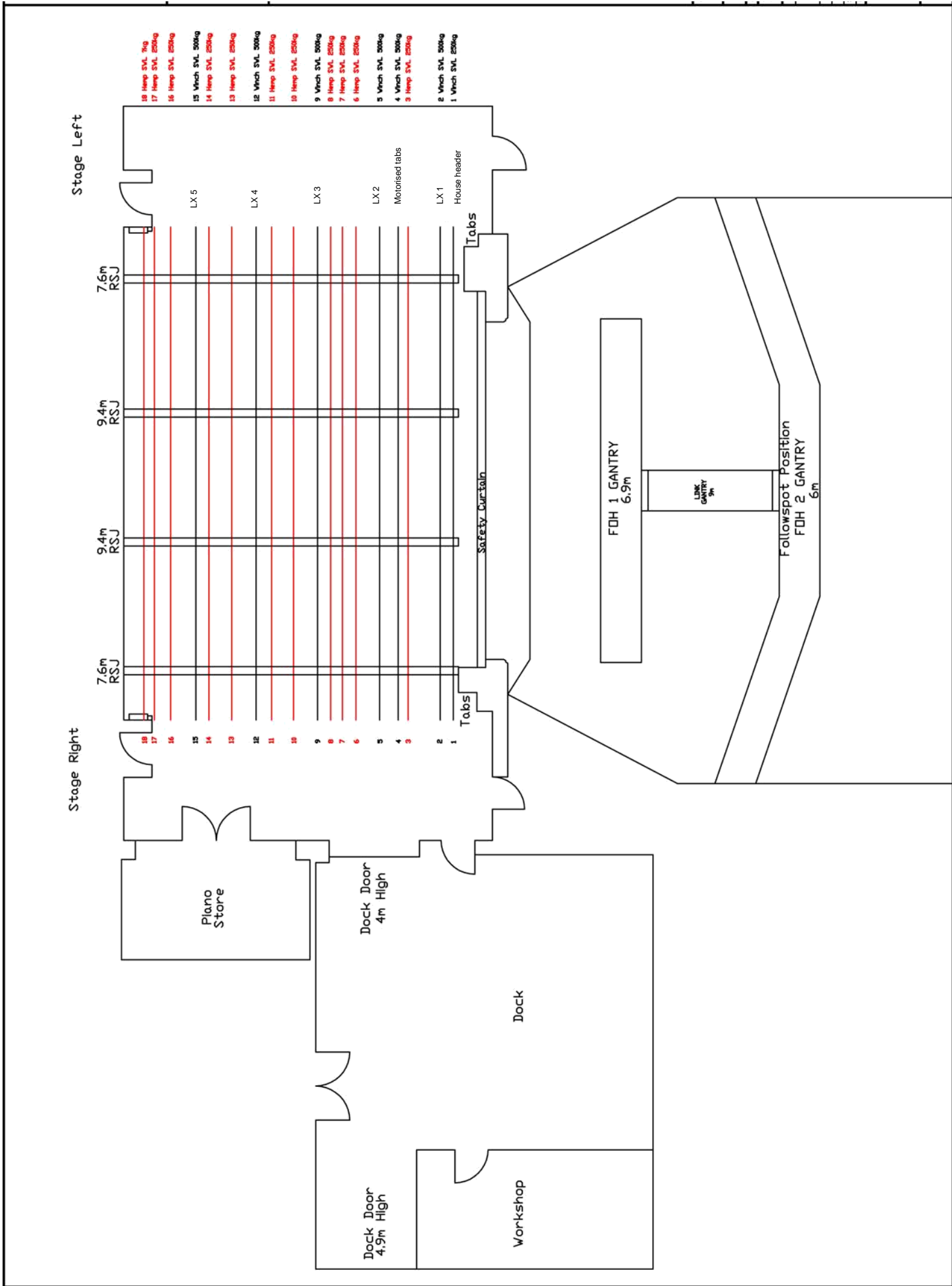
Green Room

The Green room contains coffee & tea facilities, microwaves, fridges and basic laundry facilities for company costumes only.

Free WIFI is available throughout,

Contacts

- Iain Jordan iain.jordan@regiscentre.co.uk;
tech@regiscentre.co.uk;
info@regiscentre.co.uk



Stage Right

Stage Left

7.6m RSJ

9.4m RSJ

9.4m RSJ

7.6m RSJ

18

17

16

15

14

13

12

11

10

9

8

7

6

5

4

3

2

1

18 Hemp S.V.L. 7kg

17 Hemp S.V.L. 250kg

16 Hemp S.V.L. 250kg

15 Winch S.V.L. 500kg

14 Hemp S.V.L. 250kg

13 Hemp S.V.L. 250kg

12 Winch S.V.L. 500kg

11 Hemp S.V.L. 250kg

10 Hemp S.V.L. 250kg

9 Winch S.V.L. 500kg

8 Hemp S.V.L. 250kg

7 Hemp S.V.L. 250kg

6 Hemp S.V.L. 250kg

5 Winch S.V.L. 500kg

4 Winch S.V.L. 500kg

3 Hemp S.V.L. 250kg

2 Winch S.V.L. 500kg

1 Winch S.V.L. 250kg

Plano Store

Dock Door
4m High

Dock

Dock Door
4.9m High

Workshop

House header

LX 1

LX 2

LX 3

LX 4

LX 5

Motorised tabs

House header

House header

House header

House header

House header

House header

House header

House header

House header

House header

House header

House header

House header

House header

House header

House header

House header

House header

House header

House header

House header

House header

House header

House header

House header

House header

House header

House header

House header

House header

House header

House header

House header

House header

House header

House header

House header

House header

House header

House header

House header

House header

House header

House header

House header

House header

House header

House header

House header

House header

House header

House header

House header

House header

House header

House header

House header

House header

House header

House header

House header

House header

House header

FDH 1 GANTRY
6.9m

LX 5 GANTRY
5m

Followspot Position
FDH 2 GANTRY
6m

Contra Charge Sheet

Stage	Per Day	Per Week
Steeldeck [1mx2m] (inc legs at 25,50,75cm)	10.00	20.00
Treads for steeldeck [per set]	5.00	15.00
Pit used	100.00	
Apron used	120.00	
Lighting		
Followspot use [Excludes op]	35.00	
Full cyc Starcloth rigged	85.00	250.00
Sanyo XF45 10,000lumens (rigged back of auditorium)	150.00	900.00
Mini projector for smaller spaces	60.00	120.00
Sound		
Single channel of radio mic	25.00	60.00
Full system of 8 radio mics	150.00	450.00
Cable microphones – [2 included]	4.00	10.00
Full concert Grand piano [tuned once]	120.00	
Concert Grand piano	50.00	150.00
Piano tuning	70.00	
Yamaha Arius digital piano	25.00	70.00
Batteries – AA - each	0.70	
Box of 10 AA	6.00	
Effects		
Haze /Snow fluid per bottle used	15.00	
Tapes/ Fixings		
Gaffer Tape [semi matte grade]	6.00	
Floor tape	12.00	
LX Tape	1.00	
Gel sheet	4.50	
Stage paint – at cost +10%		
Crewing [rechargeable where applicable]		
Additional Technician	15 per hour [min 60 call]	
Followspot tech	10 per hour [min 40 call]	
Get out crew	15 per hour	
After 2330 1.5x time		
After 0030 Taxi per crew member	15	
All crew have a minimum 4 hour call.		