

Technical Specification

Staffing

Duty Technician Supplied and will have knowledge of house Lighting Rig and PA System **Please Note the Duty Technician May operate a basic Lighting Plot From the Prompt corner** Please Get in touch as soon as possible if you require more than the duty technician

Stage

- **Proscenium Arch** Painted Brick with optional soft tormentors
Height – 5.18m (17'0")
Width – 8.99m (30'5") [without tormentors, 26' with.]
- **Stage Trim height** - variable between 5.18m (17') and 4.5m (15') – mobile header panel on DS winch 1
- **Depth of Stage** – 7m to iron, 8 m to ds edge, extension available, please confirm for details.
- **Stage Right Wing**
Hight -4.0m(13'1")
Width 3.2m(10'5")
- **Stage Left Wing**
Hight- 5.18(17'0")
Width- 3.9m(12'9")
- **Fly sets [SL Wing]** -
11 of 4 line hemp sets [SWL 250kg]
2 of 2line hemp with block sets [Rated SWL 50 KG]
7 of Worm Gear Winches for Header, LX and motorised ¼ Tabs [Fixed, SWL 500KG]
- **Counterweight sets** – House Tabs Flown DSR wing-Single purchase set. [dead's in to short ladder height]
- **Safety Curtain** - Single purchase caged set DSL, motorized control from prompt.
- **Orchestra Pit**
Normally positioned at Auditorium level, the front 2 rows of the seating can be removed. This can be raised hydraulically to Stage level giving a thrust of 1.91m (6.27ft) extra. A £120 contra charge applies for this per weeks use
This can be lowered to provide a pit with dimensions as follows –(optional vomitorium forestage available while down, please cotact us for details.)
MD has a single cue light, can have Coms If Required
- **Dimensions of Pit:**
Height-1.85m (6') Width- 6.97m (22'10") Depth Under Stage- 2.97m (9'8") Total Depth- 3.88m (12'8")

Power

1X Clean 32Amp SPH (Powers House Pa And Desk)
1X Clean 32Amp SPH (Located DSR)
12X 16Amp For Lx (Located Around the Theatre)

Lighting

- **Dimmers** 4x Chili 2410i racks 94 Channels – Capacity: 0.1A min /10A max

- **Lighting Desk** ETC Ion with fader wing and IRFR ipad remote
- **Lighting Rigging** 5 onstage lx bars 2 Foh
- **Followspots** - 2 RJ Manon in the Centre of Bridge 2, fitted with cans sets.
General house rig consists of a full LED Wash and open white washes and a collection of specials FOH, please contact us with specific requirements. This is adaptable although we do not pre rig without prior arrangement.
Atmospheric Effects - Chauvet Whisper, Antari hazer. Available For Hire. Various pyrotechnics are permitted with prior arrangement
No oil crackers [except DF50] permitted onsite.
All auditorium smoke detectors are rate of heat rise, haze not to be let in foyers.

Lantern stock

Permanently rigged FOH –

FOH Bridge 1 6 Strand Cantata 18/32
FOH Bridge 2 4 ETC Colorsource Spots 15/30
6 Strand Cantata 18/32
Follow Spots 2 RJ Manon

Other Rig - Mobile so long as General rig reinstated on get out. Rig Plan Available on request

14 ETC Colorsource Pars (40° lense)
20 Strand Patt 743
10 Par 64 (CP62 Lamp)
12 Strand Cantata Fresnel
4 Strand Coda 4 Cell
4 Strand Cantata PC
2 CPC Molefay 4 Cell
8 Pulse LEDBAR 320

Lighting Control

6way DMX buffer installed DSR wing
4-way DMX buffer (Mobile)
2 DMX lines installed from lighting position, to DSR wing

Sound *(in house rig)*

Sound Desk Yamaha M7CL (48/8 channel, digital sound desk) with M7CL Remote
2x KV2 ESR212, flown from proscenium sides. Powered by KV2 ESR2800 Amplifier
Optional 2 KV2 EX1.5 Active Subwoofer

Play Back Mac Pro With Fully licensed Qlab
CD Player

Foldback 2 Wharfedale Si 12 Flown mid Stage

Multicores Runs From sound control FOH to DSL (24:8) [approx. 35m run]
On Stage DSR 32a Single phase Clean Supply, Sending to DSL via
Control Room 32a Single phase Clean Supply feeding All Sound supplies FOH
Sound Position Situated in Auditorium Right rear,

Dressing Rooms

6 Dressing Rooms Accommodating 130 People Max with show relay audio and video
1 – 3 People
2, 3, 4, - 10 People
5 – 2 People / Company office
6 – 15 People
Separate Male & Female Toilets with Showers in Each.

Green Room

The Green room contains coffee & tea facilities, microwaves, fridges and Washing Machine
Free WIFI is available throughout,

Stage Right

Stage Left

- 18 Hemp SVL 7kg
- 17 Hemp SVL 250kg
- 16 Hemp SVL 250kg
- 15 Winch SVL 500kg
- 14 Hemp SVL 250kg
- 13 Hemp SVL 250kg
- 12 Winch SVL 500kg
- 11 Hemp SVL 250kg
- 10 Hemp SVL 250kg
- 9 Winch SVL 500kg
- 8 Hemp SVL 250kg
- 7 Hemp SVL 250kg
- 6 Hemp SVL 250kg
- 5 Winch SVL 500kg
- 4 Winch SVL 500kg
- 3 Hemp SVL 250kg
- 2 Winch SVL 500kg
- 1 Winch SVL 250kg

7.6m RSJ

9.4m RSJ

9.4m RSJ

7.6m RSJ

Tabbs

Tabbs

Safety Curtain

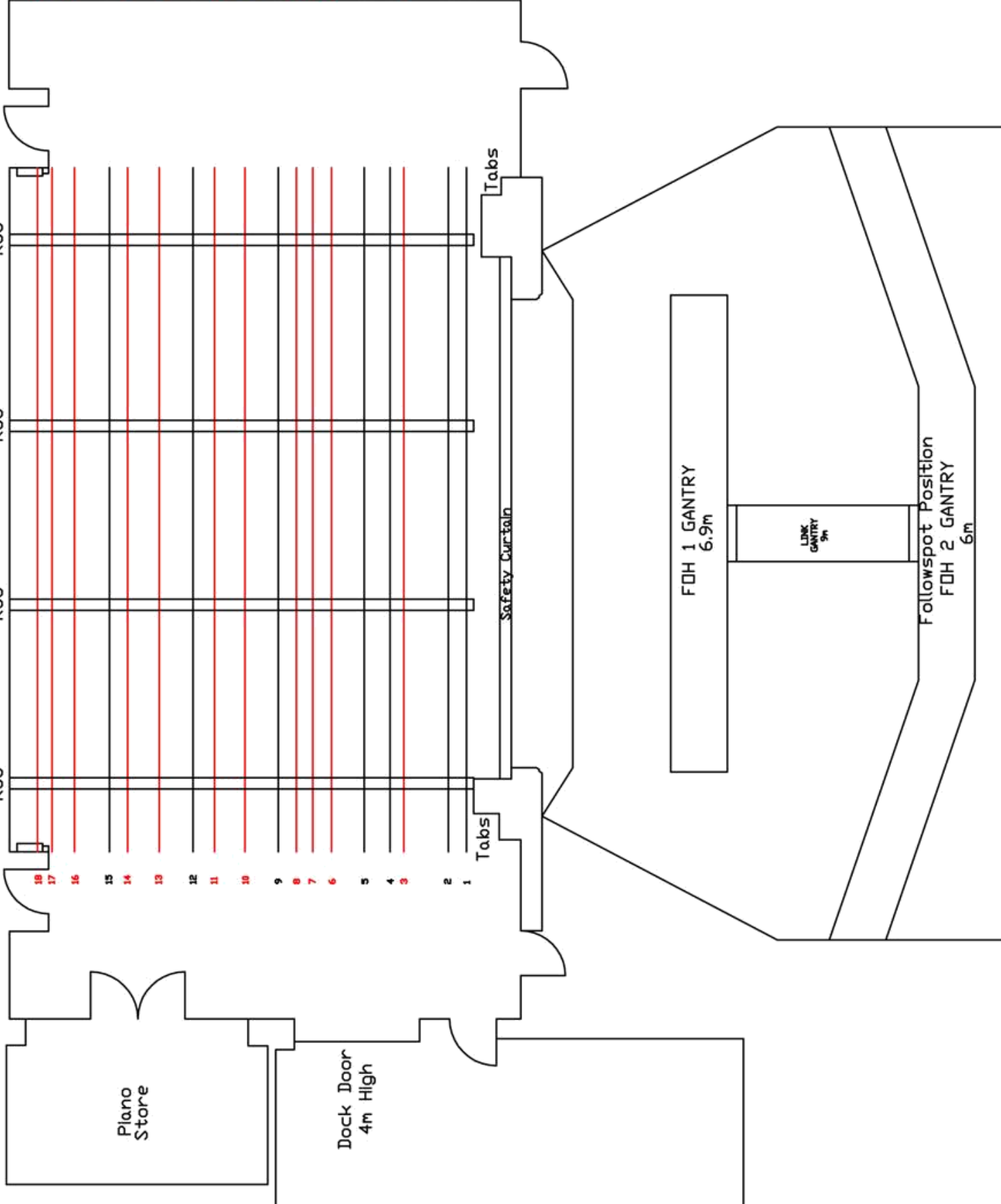
Plano Store

Dock Door
4m High

FOH 1 GANTRY
6.9m

LINK
GANTRY
9m

Followspot Position
FOH 2 GANTRY
6m



Contra Charge Sheet

Stage	Per Day/Use	Per Week
Steeldeck [1mx2m] (inc legs at 25,50,75cm) 16 available	10.00	20.00
Treads for steeldeck [per set]	5.00	15.00
Pit	60.00	120.00
Apron	60.00	120.00
Pit and Fore-stage	75.00	150.00

Lighting	Per Day/Use	Per Week
Followspot use [Excludes op]	35.00	
Full CYC Starcloth rigged	85.00	250.00
Sanyo XF45 10K lumens (rigged back of Auditorium)	150.00	900.00
Mini projector for smaller spaces	60.00	120.00
UV Cannon package (4x400watt black light)	10.00	20.00
CHAUVET maverick mk1 spot (4 available)	20.00	75.00
CHAUVET maverick mk2 wash (4 available)	10.00	35.00
CHAUVET Whisper Haze (Including Fluid)	15.00	50.00

Sound (clips, stands and cables included)	Per Day/Use	Per Week
Single channel of radio mic	25.00	60.00
Full system of radio mics (8 receivers)	150.00	450.00
<i>4 Sennheiser e835 ew300 G3 handheld</i>		
<i>8 Sennheiser Sk300 G3 beltpacks (beige lav Mics)</i>		
Drum mic kit	15.00	35.00
<i>(1x Sure PG52, 3x Shure PG56, 2x Sennheiser e614)</i>		
Cable mic's/DI's	4.00	10.00
2 SM57		
2 SM58		
2 Rode NTG1		
2 D606		
1 Audix OM6		
1 AT MB2K		
1 Behringer C-1		
4 Audio Technica Pro 45 hanging set		
4 Pulse DI 50 Box		
Full concert Grand piano [tuned once]	120.00	175.00
Yamaha Arius digital piano	25.00	70.00

Charges May apply if you require the use of just cables and stands

Consumables and other charges

Haze /Snow fluid per bottle used (1.5 ltr)	10.00
Gaffer Tape (matt finished only)	6.50
LX Tape	1.50
Piano tuning	70.00

Crewing [rechargeable where applicable]

Additional Technician	15 per hour
Follow spot operator	12.50 per hour
Stage crew	12.50 per hour
Get out crew	15 per hour

please note All crew have a minimum 4 hour call.