

Technical Specification

General Information

Staffing

A Duty Technician is supplied and will have knowledge of house Lighting Rig and PA System and will liaise with your technical team. Please get in touch as soon as possible if you require Lighting or Sound Engineers, or Crew

Loading/Parking

Loading Bay is located on the Car park side of the building. Parking pass is available for up to 3 vehicles (depending on size and all fit in our loading bay by the shutters). A Pay and display car park is next to the building.

Backstage

6 Dressing Rooms with show relay audio and video

1 For 3 People

2,3,4 For 10 People

5 For 2 People (No Video)

6 For 15 people

Green Room with Tea& Coffee Facilities, Microwave, Fridge, Washing Machine and Tumble Dryer.

The Stage

Proscenium Arched- Height **5.18m [17'0"]**
Width **8.99m [30'5"]**
Trim Height **4.5m-5.20m [15'-17']** First Header Located On winch 1
Depth **8m** From edge to back White Wall slightly less for black box

Wings Stage right Hight **4.0m [13'1"]**

Width **3.2 [10' 5"]**

Wings Stage Left Hight- **5.18 [17'0"]**

Width- **3.9m [12'9"]**

Fly sets [SL Wing] 11 of 4 line hemp sets [SWL 250kg]
2 of 2line hemp with block sets [Rated SWL 50 KG]
7 of Worm Gear Winches for Header, LX and ¼ Tabs [Fixed, SWL 500KG]

Counterweight sets House Tabs Flown DSR wing-Single purchase set. [dead's into short ladder height]

Safety Curtain Single purchase caged set DSL, motorized control from prompt.

| | |
|--|--|
| Orchestra Pit | Normally positioned at Auditorium level, the front 2 rows of the seating can be removed and can be lowered to provide a pit with dimensions as follows –(optional vomitorium forestage available while down, please contact us for details.) MD has a single cue light, can have Coms If Required |
| Dimensions of Pit: | Height- 1.85m [6'] Width- 6.97m [22'10"] Depth Under Stage- 2.97m [9'8"] Total Depth- 3.88m [12'8"] |
| Apron | This can be raised hydraulically to Stage level giving a thrust of 1.91m (6.27ft) extra. |
| A £120 contra charge applies for the use of pit or apron | |
| Power | 1X Clean 32Amp SPH (Powers House Pa and Desk) 1X Clean 32Amp SPH (Located DSR) 12X 16Amp For Lx (Located Around the Theatre) |
| Lighting | 4x Chili 2410i racks 94 Channels – Capacity: 0.1A min /10A max Lighting Desk ETC Ion with fader wing and IRFR ipad remote Lighting Rigging 5 onstage lx bars 2 Foh Follow spots 2 RJ Manon in the Centre of Bridge 2, fitted with coms |

General house rig consists of a full LED Wash and an open white wash in Fresnels and a number of specials FOH, please contact us with specific requirements. This is adaptable although we do not pre rig **Please check out house Lighting Plan**

Atmospheric Effects - Chauvet Whisper, Antari hazer. Available For Hire. Various pyrotechnics are permitted with prior arrangement

No oil crackers [except DF50] permitted onsite.

All auditorium smoke detectors are rate of heat rise, haze not to be let in foyers or backstage corridors

Lantern stock

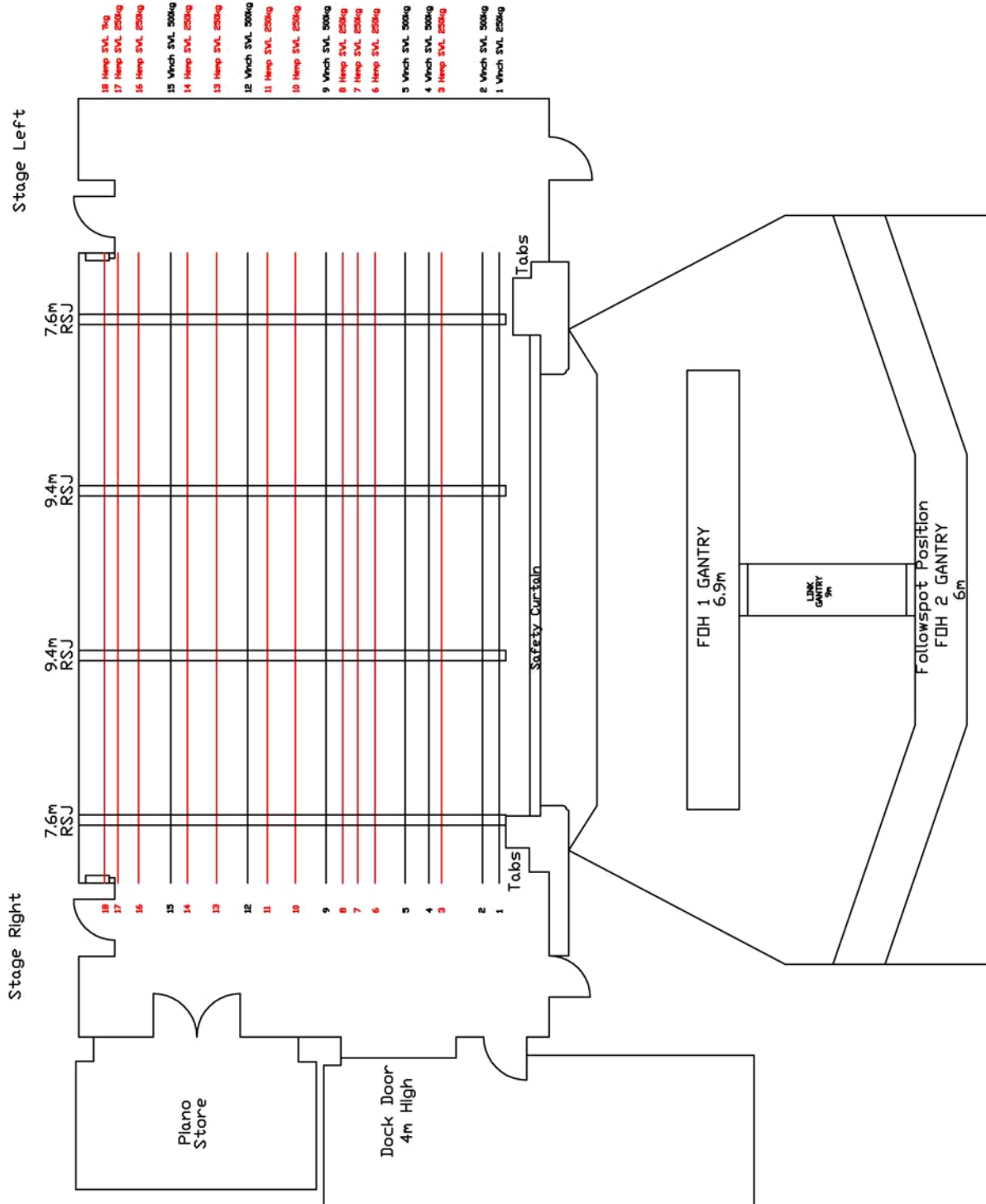
| | | |
|--------------------------|--------------|-------------------------------|
| Permanently rigged FOH – | FOH Bridge 1 | 6 Strand Cantata 18/32 |
| | FOH Bridge 2 | 4 ETC Colorsource Spots 15/30 |
| | | 4 Source Four 15/30 |
| | | 4 Source Four 25/50 |
| | Follow Spots | 2 RJ Manon |

Other Rig –

Mobile so long as General rig reinstated on get out. Rig Plan Available on request

| | |
|----|---------------------------------|
| 14 | ETC Colorsource Pars (40 lense) |
| 20 | Strand Patt 743 |
| 10 | Par 64 (CP62 Lamp) |
| 12 | Strand Cantata Fresnel |
| 4 | Strand Coda 4 Cell |
| 4 | Strand Cantata PC |
| 2 | CPC Molefay 4 Cell |
| 8 | Pulse LEDBAR 320 |
| 8 | Source Four jr 25/50 |

| | |
|-------------------------------------|--|
| Lighting Control | 10 Way Swisson Rdm/DMX Buffer 6way DMX buffer installed DSR wing 4-way DMX buffer (Mobile) 2 DMX lines installed from lighting position, to DSR wing |
| Sound Desk | Yamaha M7CL (48/8 channel, digital sound desk) 2x KV2 ESR212, flown from proscenium sides. [Powered by KV2 ESR2800 Amplifier Optional 2 KV2 EX1.5 Active Subwoofer Sound Position Situated in Auditorium Right rear, |
| Play Back Foldback Multicores | Mac Pro With Fully licensed Qlab 2 Wharfedale Si 12 Flown mid Stage Runs From sound control FOH to DSL (24:8) [approx. 35m run] |



Contra Charge Sheet

| | £Per Day/Use | £Per Week |
|--|---------------------|------------------|
| Steeldeck [1mx2m] (inc legs at 25,50,75cm) 16 available | 10.00 | 20.00 |
| Treads for steeldeck [per set] | 5.00 | 15.00 |
| Pit | 60.00 | 120.00 |
| Apron | 60.00 | 120.00 |
| Pit and Fore-stage | 75.00 | 150.00 |
| Full Starcloth rigged | 85.00 | 250.00 |
| Sanyo XF45 10K lumens (rigged back of Auditorium) | 150.00 | 900.00 |
| Mini projector for smaller spaces | 60.00 | 120.00 |
| UV Cannon package (4x400watt black light) | 10.00 | 20.00 |
| CHAUVET maverick mk1 spot (4 available) | 20.00 | 75.00 |
| CHAUVET maverick mk2 wash (4 available) | 10.00 | 35.00 |
| CHAUVET Whisper Haze (Including Fluid) | 15.00 | 50.00 |
| Followspot use [Excludes op] | 35.00 | |
| Sound (clips, stands and cables included) | £Per Day/Use | £Per Week |
| Single channel of radio mic | 25.00 | 60.00 |
| Full system of radio mics (8 receivers) | 150.00 | 450.00 |
| 4 Sennheiser e835 ew300 G3 handheld | | |
| 8 Sennheiser Sk300 G3 belt packs (beige lav Mics) | | |
| Drum mic kit | 15.00 | 35.00 |
| (1x Sure PG52, 3x Shure PG56, 2x Sennheiser e614) | | |
| Cable mic's/DI's | 4.00 | 10.00 |
| 2 SM57 | | |
| 2 SM58 | | |
| 2 Rode NTG1 | | |
| 2 D606 | | |
| 1 Audix OM6 | | |
| 1 AT MB2K | | |
| 1 Behringer C-1 | | |
| 4 Audio Technica Pro 45 hanging set | | |
| 4 Pulse DI 50 Box | | |
| Full concert Grand piano [tuned once] | 120.00 | 175.00 |
| Yamaha Arius digital piano | 25.00 | 70.00 |
| Charges May apply if you require the use of just cables and stands | | |
| Other charges | | |
| Haze /Snow fluid per bottle used (1.5 ltr) | 10.00 | |
| Gaffer Tape (matt finished only) | 6.50 | |
| LX Tape | 1.50 | |
| Piano tuning | 70.00 | |
| Follow spot operator | 12.50 per hour | |
| Stage crew | 12.50 per hour | |
| Get out crew | 20 per hour | |
| May Be able to Provide Lighting Or Sound Engineers Please get in touch | | |
| please note All crew have a minimum 4 hour call. | | |